

CAPABILITY STATEMENT



Rangecon is a mining services company that specialises in underground project construction, shotcreting, cable bolting, ground support and civil infrastructure projects.

Rangecon founders have over 25 years' experience in the mining sector. Rangecon have the employees, skills, experience, plant & equipment to deliver projects across multiple disciplines for their clients.

History

Founded in 2014 by John Devereux & Nic Hicks to service the mining sector, Rangecon has grown into a multi-faceted business. Rangecon provide its services to mine sites Australia wide. Rangecon's head office is in Adelaide, South Australia with a satellite office in Kalgoorlie and workshop facility in Exmouth, Western Australia.

Cable Bolting Services

Rangecon have designed a cutting edge cable bolting machine. Developed to improve safety and efficiency. Currently installing 12,000Lm+ per month of cable bolts, dramatically reducing the manpower and increasing the productivity. It eliminates the manual handling that is traditionally involved with the installation of the cable bolts, drastically reducing the risk of injuries.

Shotcrete Application

Rangecon provide complete management of shotcreting projects from mix design, QA, delivery and application of fibrecrete for surface and underground support projects. Our specialised equipment takes advantage of cutting-edge 3D scanning technology to facilitate our client's QA processes.



www.rangecon.com.au
Builders Registration
WA: 101006 SA: 277440 NT: 228237CU

Postal PO Box 85 . Exmouth . WA . 6707
Street 30 Hunt St . Exmouth . WA . 6707

john@rangecon.com.au
nic@rangecon.com.au

0408 129 685
0407 779 401

ACN: 169 718 450
ABN: 36 169 718 450

CAPABILITY STATEMENT



Concrete Supply

Rangecon supplies and lays concrete mixes for a range of applications across the mining sector with a focus on large scale infrastructure projects. Our proven technical and management capabilities have seen Rangecon successfully deliver civil and concrete works for new Ball Mills and crusher plants. Operating our own agitator trucks and batching equipment, Rangecon delivers a complete concrete package where all the variables are handled in-house to suit our client's needs.

Civil Construction

Rangecon provides quality civil works to the mining industry, including bulk earth works, surface and underground mining works, road works and demolition. With essential services in-house, Rangecon is able to lower its costs and guarantee its services through the availability of personnel and equipment for any project regardless of its location.

Design & Construct Projects

Rangecon has successfully delivered joint venture projects, collaborating with local government and listed companies to deliver large workforce accommodation projects across Australia.

Underground Constructions & Services

- Construction of vent walls and spray with shotcrete
- Design, fabrication and installation of vent doors and vent controllers
- Airleg mining and concrete civil works within underground environments
- General ground support
- Primary vent fan installations
- Primary dewatering services such as installation of pump stations, dam walls and rising mains
- Magazine construction, design and construction of fire deluge systems



www.rangecon.com.au
Builders Registration
WA: 101006 SA: 277440 NT: 228237CU

Postal PO Box 85 . Exmouth . WA . 6707
Street 30 Hunt St . Exmouth . WA . 6707

john@rangecon.com.au
nic@rangecon.com.au

0408 129 685
0407 779 401

ACN: 169 718 450
ABN: 36 169 718 450

PAST PROJECTS

1 Cable bolting installation – Kundana Kalgoorlie, 12,000Lm+ per month.



2 Shotcrete services - Kanowna Belle, Jundee, Mt Charlotte & the Superpit.

3 Calidus Resources, Warrawoona Accommodation Village - design and construct 240 man accommodation camp and all associated civil works.



4 Northern Star Resources Limited, Ford Bayley Accommodation Camp - design and construct 283 rooms and all associated civil works. Rangecon provided asset procurement, tenure and approvals.

PAST PROJECTS

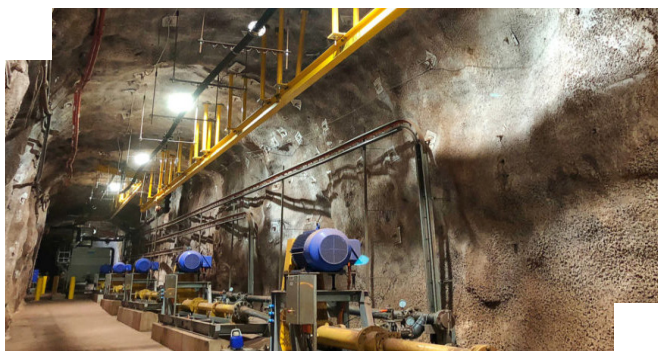
5 Ball Mill - complete all civil & trenching works required for new crusher & screening. Concrete to AS3600, all excavation, steel fixing, formwork by Rangecon.



6 Degrussa Mill Upgrade – complete concrete and civil works to new thickener and filter building with suspended slab. Concrete to AS3600, all excavation, steel fixing, formwork by Rangecon.



7 Crusher Plant - complete all civil & trenching works required for new crusher and screening. Concrete to AS3600, all excavation, steel fixing, formwork by Rangecon.



8 Underground Pump Station – prep and install concrete, steel and formwork. Install all suction and discharging pipe work. Install monorail and main water storage hopper. Install 5 x WT088 pumps and commission

PAST PROJECTS

9 Installation of underground magazine, concrete, gates and fire deluge system, designed and constructed by Rangecon.



10 Construction of ventilation walls and spray with shotcrete. Installation of ventilation control systems, such as pneumatic ventilation doors and DBR's.

11 Underground primary vent fan - all concrete works, installation of fans, steelwork, pneumatic vent doors, vent walls and shotcrete.

